

Data Sheet

201001036

Hydraulic Unit Telescopic Lip 3V with 3.5L liniair oiltank



Motor:

Power 1,5 kW

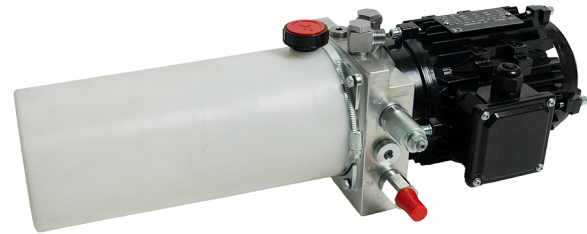
Poles 2 (2800 turn. /min), nominal tension 230/400V-50Hz, Absorption -2,5A to 400V, intermittent service – S2-1min

Pump:

Cubic capacity $q = 1,6\text{cc}$

Gear type, with fixed capacity $Q = 4,2\text{ Lt/min}$

It is forbidden to invent the sense of rotation even it is for brief periods time.



Dimensions L x W x H = 550x260x210mm

Pressure: $p(\text{max}) = 15\text{ MPa}$

Electromagnets: 24VDC18W

Warning: If the pump works without intaking oil, it will be damaged in an irreparable way.

Filter: Made of metallic nets, filtering capacity $90\mu\text{m}$.

Oil: Mobil DTE 10 Exel 15 (article nr 2020003 5 Litres). Quantity $V = 3.0\text{ Litres}$

Oil Plug: The power pack oil plug features an internal air filter, it has a diameter of G1/2inch

Article number IDD-Parts: 201001036

Attention:

n case your control box still has traditional glass fuses, make sure they are at least 10A slow.

V₁ = Main cylinder

V₂ = Lip cylinder (out)

V₃ = Lip cylinder (in)

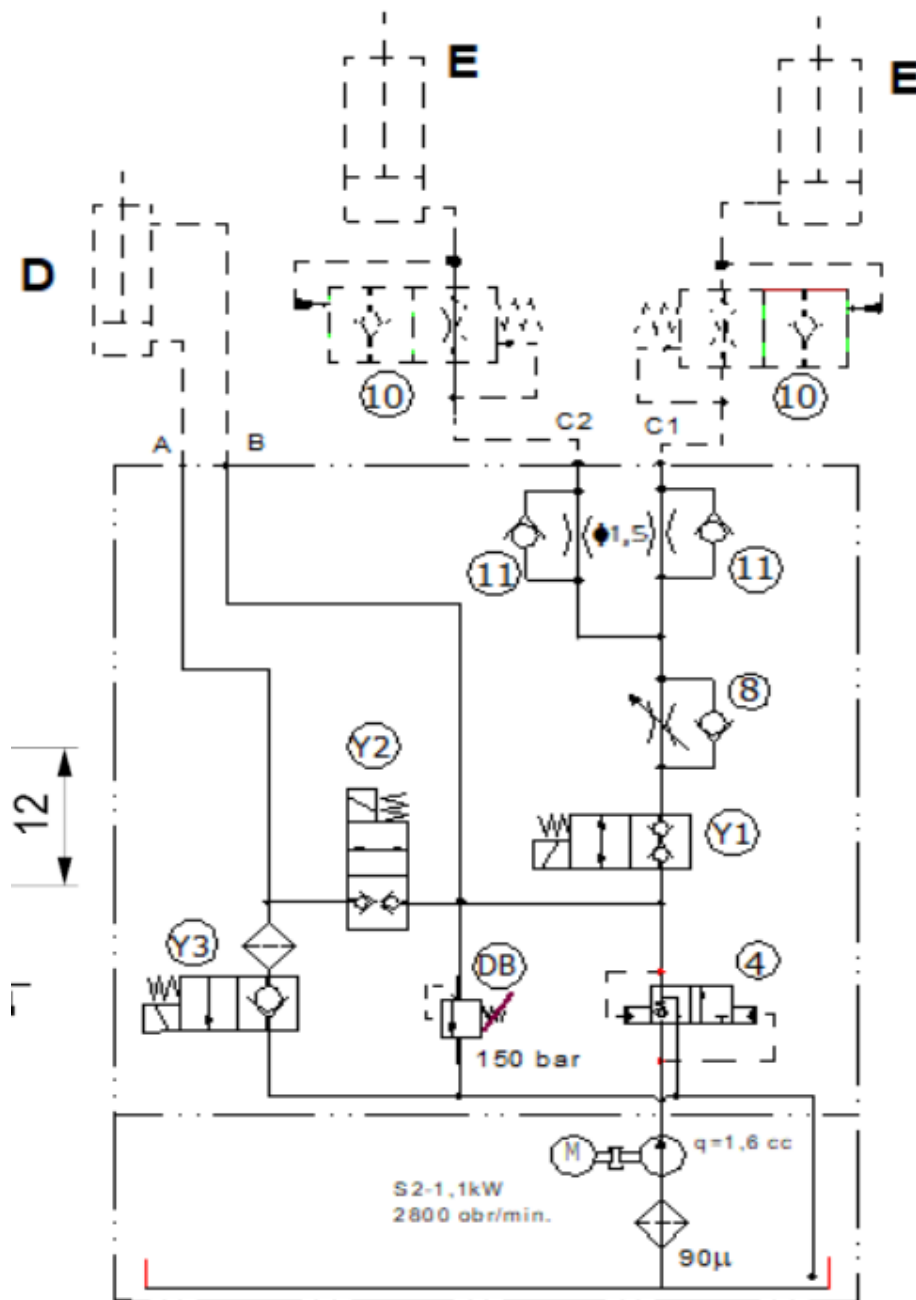
C₁ = Lift cylinder

C₂ = Blocked or 2nd Lift Cylinder

A = lip cylinder (connection 1) B = Lip cylinder (connection 2)

Note: Hydraulic schedule page 2
Adjustable bracket page 2

Data Sheet | Hydraulic Unit Swing Lip 1V with 3,5L liniar oiltank



Universal bracket: Adjustable mounting positions.

