

# Data Sheet

201001039 /40/ 41/ 42/ 43/ 44

Hydraulic Unit Swing Lip 1V with liniar oiltank



## Motor:

Power 1,5 kW

Poles 2 (2800 turn. /min), nominal tension 230/400V-50Hz, Absorption -2,52A to 400V, intermittent service – S2-1min



## Pump:

Cubic capacity  $q=2,1\text{cc}$

Gear type, with fixed capacity  $Q= 5,5 \text{ Lt/min}$

It is forbidden to invert the sense of rotation even it is for brief periods time.

Dimensions L x W x H =462x262x234mm

**Pressure:**  $p(\text{max}) = 12,5 \text{ MPa}$

**Electromagnets:** 24VDC18W

**Warning:** If the pump works without intaking oil, it will be damaged in an irreparable way.

**Filter:** Made of metallic nets, filtering capacity  $90\mu\text{m}$ .

**Oil:** Mobil DTE 10 Exel 15 (article nr 2020003 5 Litres). Quantity  $V=4,5 \text{ Litres}$

**Oil Plug:** The power pack oil plug features an internal air filter, it has a diameter of G1/2inch

**Article number IDD-Parts:** 201001039 /40/ 41/ 42/ 43/ 44

## Attention:

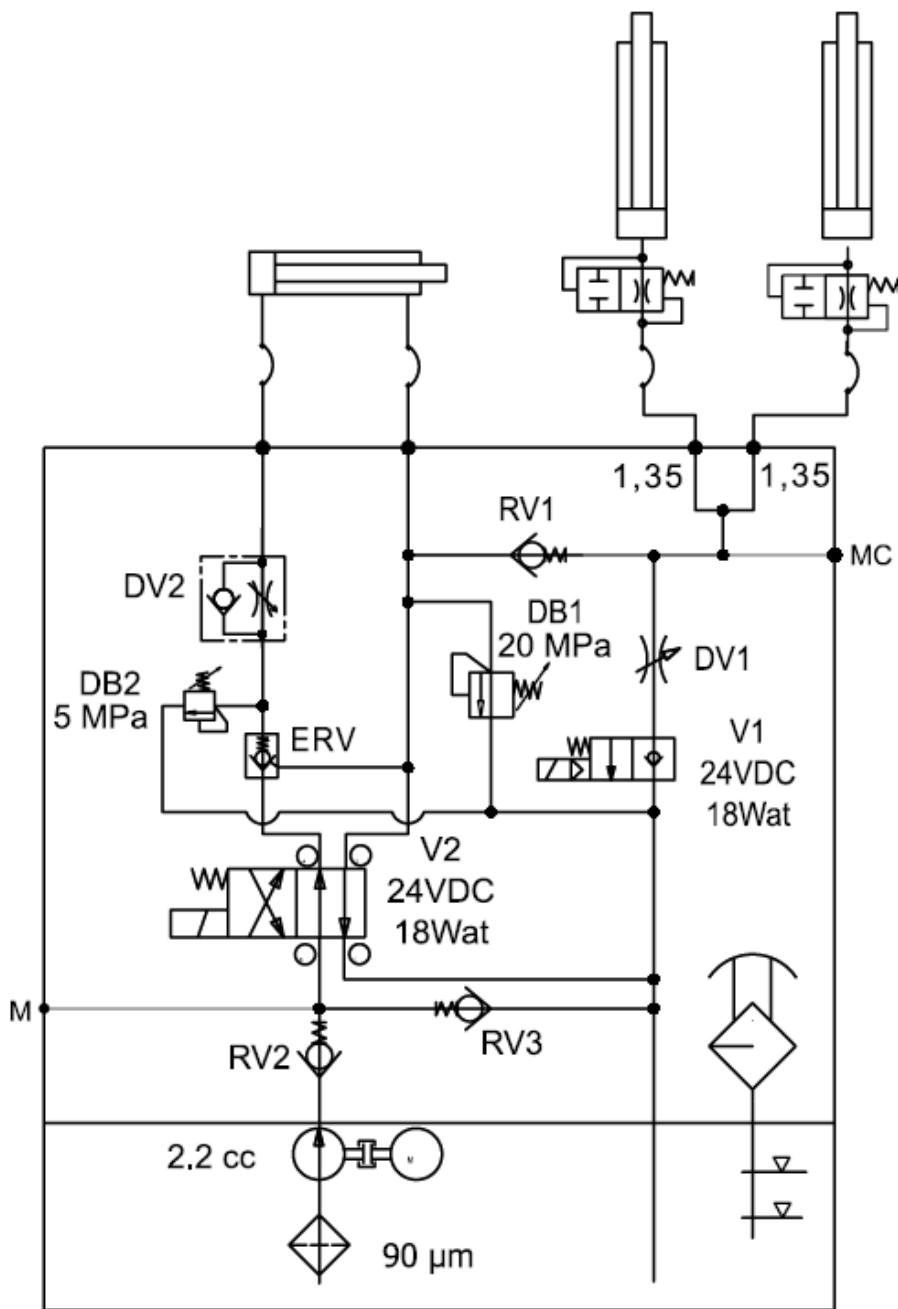
In case your control box still has traditional glass fuses, make sure they are at least 10A slow.

V<sub>1</sub> = Main cylinder

V<sub>2</sub> = Mechanical Pressure valve Lip Cilinder

**Note:** Hydraulic schedule page 2  
Adjustable bracket page 2

# Data Sheet | Hydraulic Unit Swing Lip 1V with liniar oiltank



**Universal bracket:** To adjust valves: remove 1 of the brackets and powerpacks stays in position. After removing add bracket again.

