

Data Sheet

201001052 /53 /54

Hydraulic Unit Swing Lip 1V with 3,5L liniair oiltank



Motor:

Power 1,5 kW

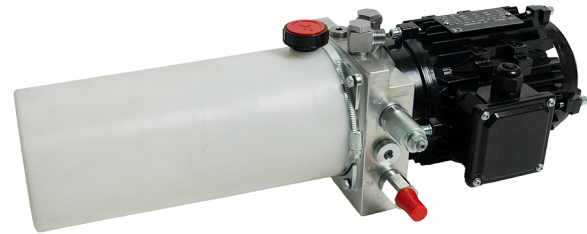
Poles 2 (2800 turn. /min), nominal tension 230/400V-50Hz, Absorption -2,52A to 400V, intermittent service – S2-1min

Pump:

Cubic capacity $q=2,1\text{cc}$

Gear type, with fixed capacity $Q= 5,5 \text{ Lt/min}$

It is forbidden to invent the sense of rotation even it is for brief periods time.



Dimensions L x W x H = 550x26x190mm

Pressure: $p(\text{max}) = 12,5 \text{ MPa}$

Electromagnets: 24VDC18W

Warning: If the pump works without intaking oil, it will be damaged in an irreparable way.

Filter: Made of metallic nets, filtering capacity 90 μm .

Oil: Mobil DTE 10 Exel 15 (article nr 2020003 5 Litres). Quantity $V=3.0 \text{ Litres}$

Oil Plug: The power pack oil plug features an internal air filter, it has a diameter of G1/2inch

Article number IDD-Parts: 201001052 /53 /54

Attention:

In case your control box still has traditional glass fuses, make sure they are at least 10A slow.

V₁ = Main cylinder

V₂ = Mechanical Pressure valve Lip Cilinder

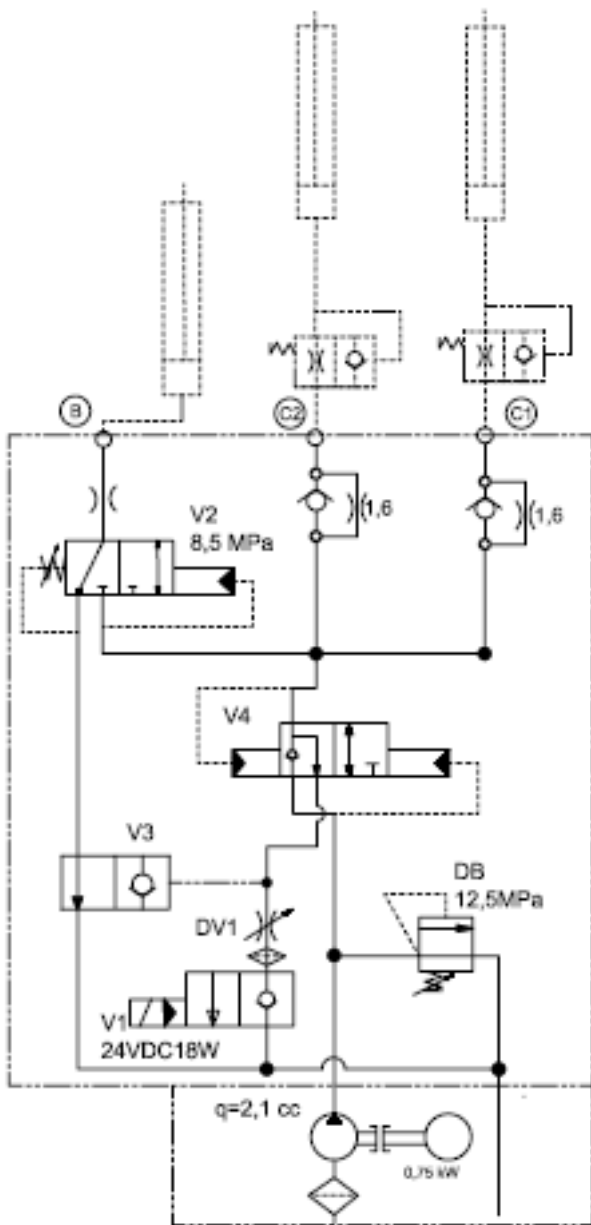
C₁= Lift cylinder

C₂= blocked or 2nd Lift cylinder

B₁= Lipcylinder

Note: Hydraulic schedule page 2
Adjustable bracket page 2

Data Sheet | Hydraulic Unit Swing Lip 1V with 3,5L liniar oiltank



Universal bracket: To adjust valves: remove 1 of the brackets and powerpacks stays in position. After removing add bracket again.

