

# Data Sheet

201001057/ 201001059

Hydraulic Unit Telescopic Lip 3V with liniair oiltank



## Motor:

Power 1,5 kW

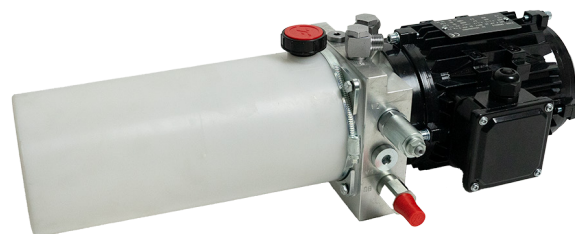
Poles 2 (2800 turn. /min), nominal tension 230/400V-50Hz, Absorption -2,52A to 400V, intermittent service – S2-1min

## Pump:

Cubic capacity  $q=1,6$  cc

Gear type, with fixed capacity  $Q= 4,2$  Lt/min

It is forbidden to invert the sense of rotation even it is for brief periods time.



Dimensions L x W x H = 462x270x226mm

**Pressure:**  $p(\max) = 12,5$  MPa

**Electromagnets:** 24VDC18W

**Warning:** If the pump works without intaking oil, it will be damaged in an irreparable way.

**Filter:** Made of metallic nets, filtering capacity 90 $\mu$ m.

**Oil:** Mobil DTE 10 Exel 15 (article nr 2020003 5 Litres). Quantity  $V=4,5$  Litres

**Oil Plug:** The power pack oil plug features an internal air filter, it has a diameter of G1/2inch

**Article number IDD-Parts:** 201001057/ 201001059

## Attention:

In case your control box still has traditional glass fuses, make sure they are at least 10A slow.

V<sub>1</sub> = Main cylinder

V<sub>2</sub> = Lip Cilinder

V<sub>3</sub> = Lip Cilinder (in)

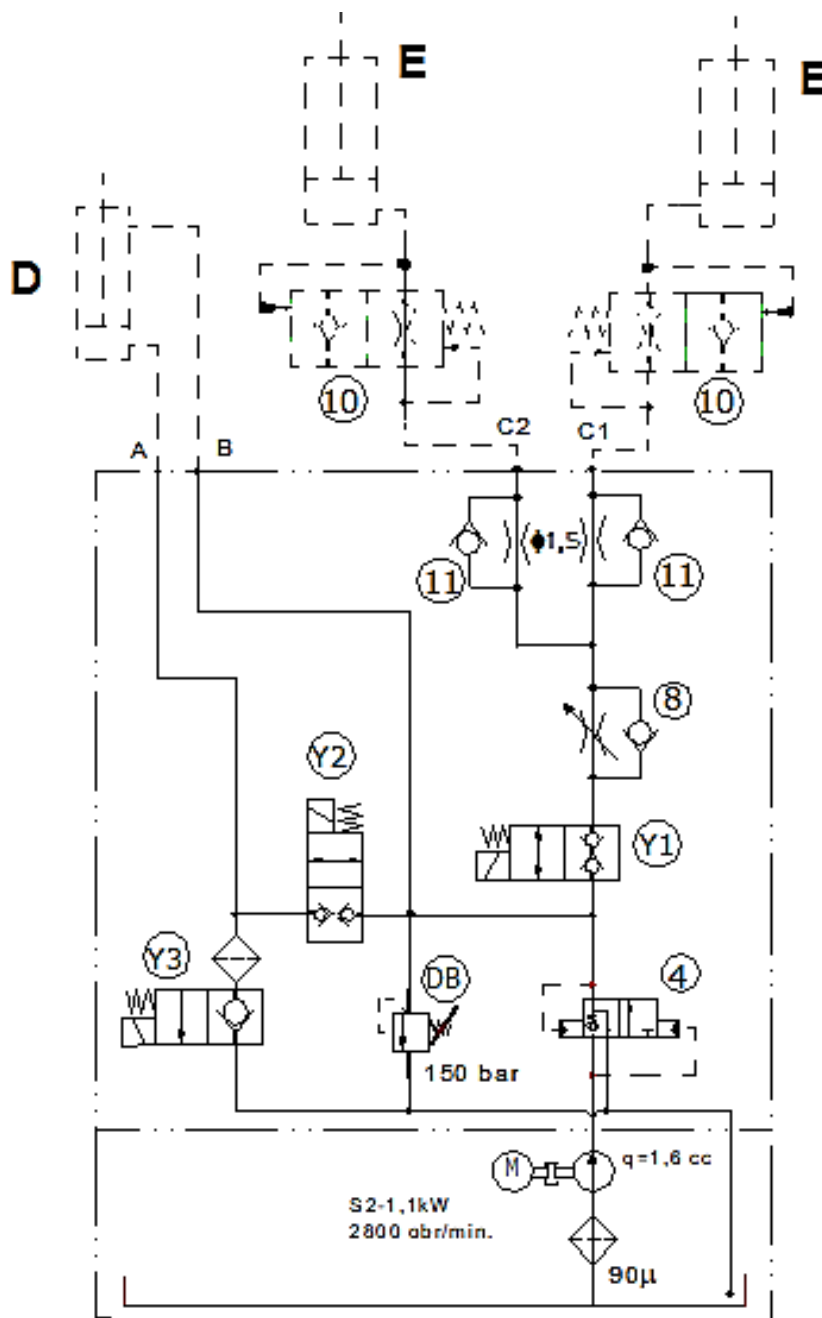
C<sub>1</sub>= Lift cylinder

C<sub>2</sub>= Blocked or 2nd Lift cylinder

A= Lip cylinder (connection 1 ) B= Lip cylinder (connection 2)

**Note:** Hydraulic schedule page 2  
Adjustable bracket page 2

# Data Sheet | Hydraulic Unit Telescopic Lip 3V with liniair oiltank



**Universal bracket:** To adjust valves: remove 1 of the brackets and powerpacks stays in position. After removing add bracket again.

