

# Data Sheet

201001070

Hydraulic Unit Swing Lip 1V with liniar oiltank



## Motor:

Power 1,5 kW

Poles 2 (2800 turn. /min), nominal tension

230/400V-50Hz

Absorption -2,52A to 400V, intermittent

service – S2-1min



## Pump:

cubic capacity  $q=2,1cc$

Gear type, with fixed capacity  $Q= 5,5$  Lt/min

It is forbidden to invent the sense of rotation even it is for brief periods time

Dimensions L x W x H = 462x262x234mm

**Pressure:**  $p(\max) = 12,5$  MPa

**Electromagnets:** 24VDC18W

**Warning:** If the pump works without intaking oil, it will be damaged in an irreparable way.

**Filter:** Made of metallic nets, filtering capacity 90 $\mu$ m.

**Oil:** Mobil DTE 10 Exel 15 (article nr 2020003 5 Litres). Quantity  $V=4,5$  Litres

**Oil Plug:** The power pack oil plug features an internal air filter, it has a diameter of G1/2 inch

**Article number IDD-Parts:** 201001070

## Attention:

In case your control box still has traditional glass fuses, make sure they are at least 10A slow.

V<sub>1</sub> = Main cylinder

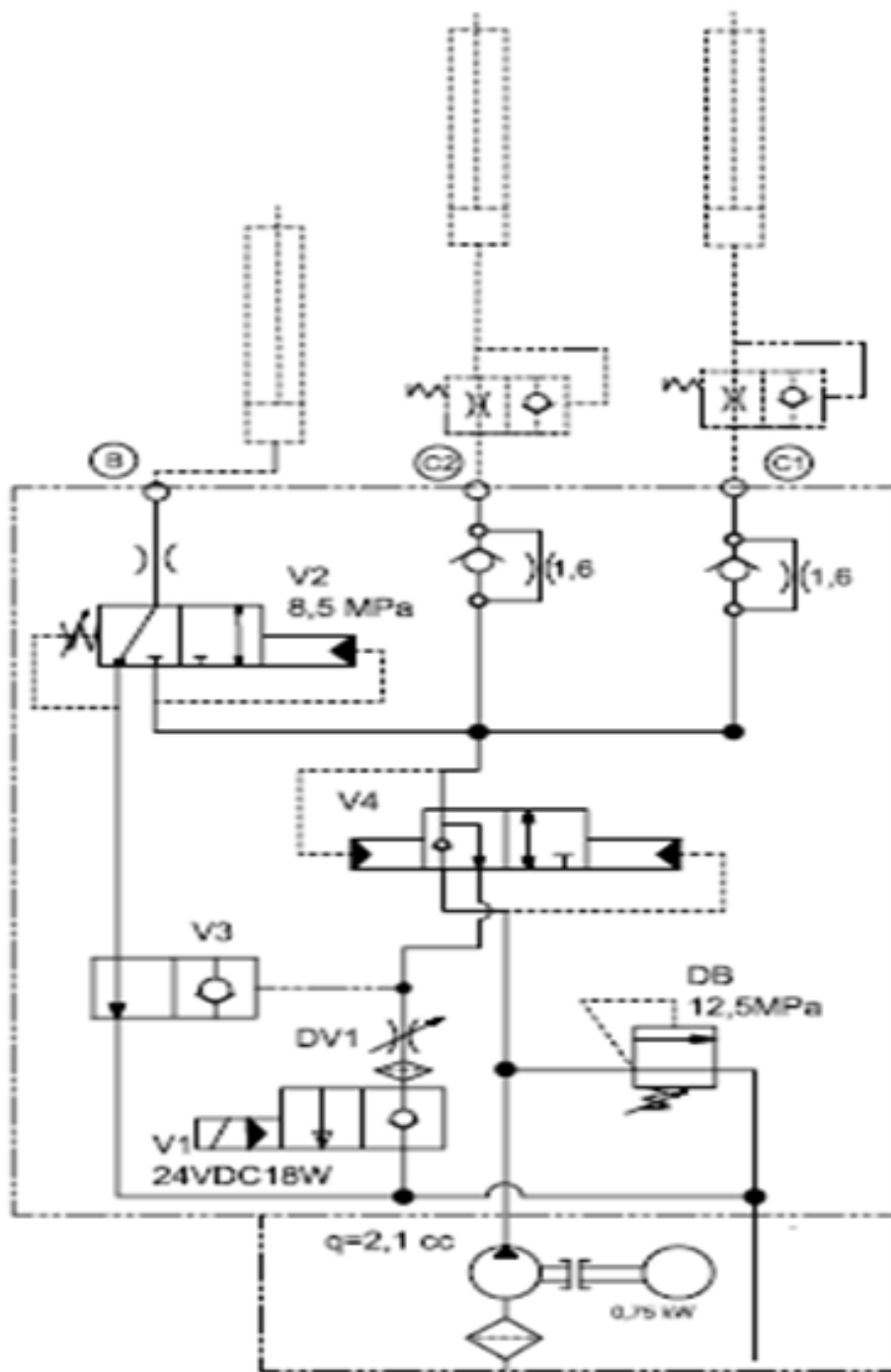
V<sub>2</sub> = Mechanical Pressure valve Lip Cilinder

## Note:

Hydraulic schedule page 2

Adjustable bracket page 2

# Data Sheet | Hydraulic Unit Swing Lip 1V with liniar oiltank



**Universal bracket:** To adjust valves: remove 1 of the brackets and powerpacks stays in position. After removing add bracket again.

