

Data Sheet

201001072

Hydraulic Unit Telescopic Lip 3V with liniair oiltank



Motor:

Power 1,5 kW

Poles 2 (2800 turn. /min), nominal tension 230/400V-50Hz

Absorption -2,52A to 400V, intermittent service – S2-1min

Pump:

cubic capacity $q=1,6$ cc

Gear type, with fixed capacity $Q= 4,2$ Lt/min It is forbidden to invert the sense of rotation even it is for brief periods time.



Dimensions L x W x H = 462x270x226mm

Pressure: $p(\max) = 15$ MPa

Electromagnets: 24VDC18W

Warning: If the pump works without intaking oil, it will be damaged in an irreparable way.

Filter: Made of metallic nets, filtering capacity 90 μ m.

Oil: Mobil DTE 10 Exel 15 (article nr 2020003 5 Litres). Quantity $V=4,5$ Litres

Oil Plug: The power pack oil plug features an internal air filter, it has a diameter of G1/2 inch

Article number IDD-Parts: 201001072

Attention:

In case your control box still has traditional glass fuses, make sure they are at least 10A slow.

V1 = Main cylinder

V2 = Lip Cilinder (out)

V3 = Lip Cilinder (in)

C1= Lift cylinder

C2= Blocked or 2nd Lift cylinder

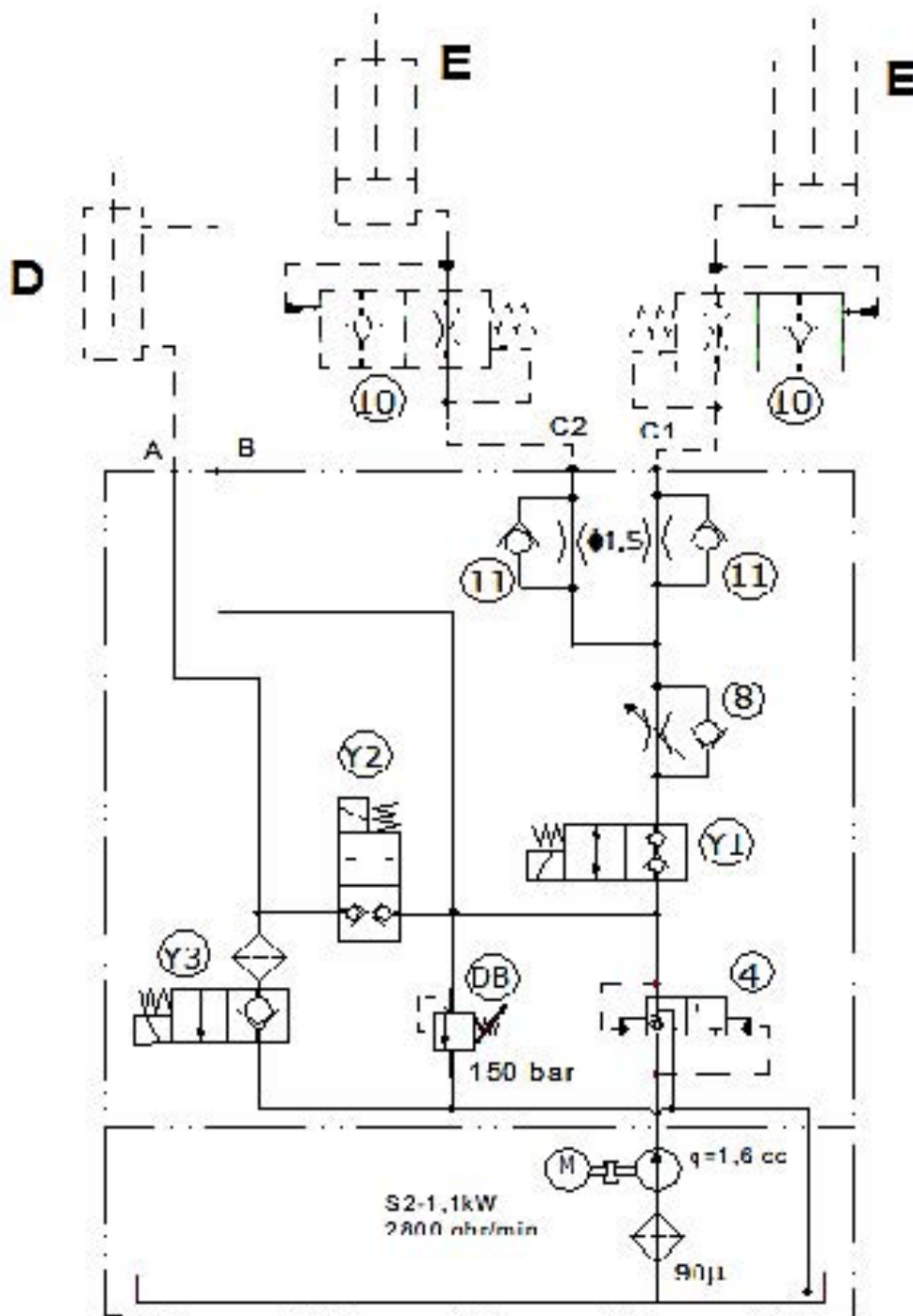
A= Lip cylinder (connection 1) B= Lip cylinder (connection 2)

Note:

Hydraulic schedule page 2

Adjustable bracket page 2

Data Sheet | Hydraulic Unit Telescopic Lip 3V with liniair oiltank



Universal bracket: To adjust valves: remove 1 of the brackets and powerpacks stays in position. After removing add bracket again.

